



**Art  
Adventures  
for  
Preschoolers**



**Winterset  
Art  
Center**

Like us on Facebook!



**WAC  
Mission Statement**

*"The Winterset Art Center, Inc is a not for profit organization dedicated to art education; to the history and preservation of local art and artists; and to the support and promotion of artistic endeavor in Winterset, in Madison County and in the State of Iowa."*

Cut along dotted line

I am excited to attend class  
at the Winterset Art Center!

Signed:

Winterset Art Center  
P.O. Box 325  
Winterset, Iowa 50273

—To Mail: Fold here, tape edges and add stamp.—

# Art Adventures



Are you interested in having your preschooler experience art, but you don't have the knowledge, supplies, or desire to clean up the mess?

Let the Winterset Art Center help you! We are excited to share our love of creating with your students. Preschool Art Classes are design for children who are developing their fine motor skills and learning about the world around them.



## Class Times:

Classes will be on Wednesdays starting April 19th and going through May 10th with choice between morning or afternoon sessions . Space is limited so don't delay!

First Session: 10:30am - 11:30am

Second Session: 1:30pm - 2:30pm

## Prices:

Price for 4 sessions:

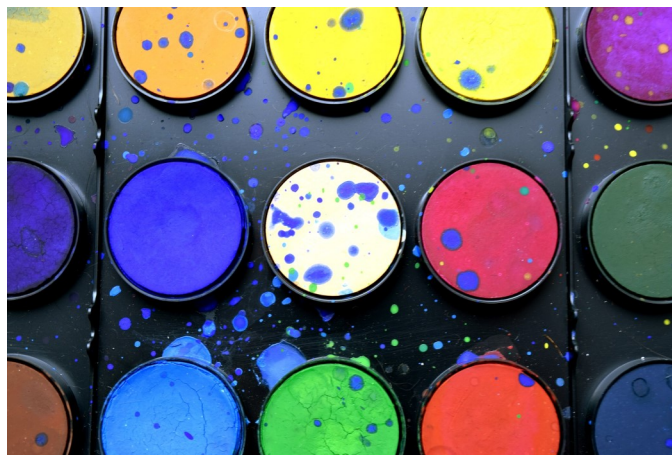
Members: \$20 per child

Non-members: \$25 per child

## Membership:

**Single- \$25 Family- \$50**

Benefits: Discounts on Classes, Discounts on renting facilities, access to open studio, ability to show and sell your artwork.



Registration Form:

1. Preschooler's Name: \_\_\_\_\_

2. Preschooler's Name: \_\_\_\_\_

Parent Name: \_\_\_\_\_

Address: \_\_\_\_\_

Phone : \_\_\_\_\_

Email: \_\_\_\_\_

Membership: Single \$25 Family \$50

Mark which session:

Morning session \_\_\_\_\_

Afternoon Session \_\_\_\_\_

Amount Enclosed: \_\_\_\_\_

Please make check payable to the Winterset Art Center

224 S. John Wayne Drive

Winterset, Iowa 50273

**You can also pay on our Facebook page "Winterset Art Center" and leave a message or contact Angela Newman at 804-380-8079**